



TECHNISCHE UNIVERSITÄT
CHEMNITZ

Universitätsrechenzentrum

Introduction to the Services of the University Computing Centre





Outline

- What is the University Computing Centre (URZ)?
- What kind of services are available?
- How can I use these services?
- General hints and suggestions for using the IT services

These slides are available at mytuc.org/vmsq





Student User Account - Activation

- <https://idm.hrz.tu-chemnitz.de/apps/sbservice/student/>
- data record sheet („Datenkontrollblatt“) necessary
- after filling in and reading/accepting the terms of service: print out the **General terms of use**
- your user name (NKZ) is shown – **memorise it**
- sign it, bring or send the signed „General terms of use“ to the IT service desk of the URZ



TUC-Card

- access to pools
- fetching print jobs at mfp
- identification for the library
- matriculation, confirmation (each term), de-registration
- (VMS, refectory, ...)

Please, regard: When leaving the university, you are no longer user of any URZ service.





Student User Account

- holds personal data (please update in case of change)
- password adjustments
- services (e-mail, storage, databases)
- finances (printing/papercut)

Please, take care of your password!

<https://www.tu-chemnitz.de/urz/idm/account/password.html>

- for mobile devices: use service of device specific passwords (IdM)



Private Storage and E-Mail

E-Mail

- limited quota
- mail aliases(standard: *given name.surname@sYEAR.tu-chemnitz.de*)
- read E-Mail regularly, it is the primary instrument for communication within the university
- forwarding policies

Storage

- individual HOME directories for LINUX and Windows, limited quota
- special folders : PRIVAT, public_html (AFS)
- **put sensitive data always into PRIVAT**
- **avoid using local file system**



External Access

- E-Mail
 - <https://mail.tu-chemnitz.de>
- Storage
 - <https://login.tu-chemnitz.de>
 - WFM
 - SmartWFM
 - SSH
- Connect directly to the campus network via Virtual Private Network (VPN)

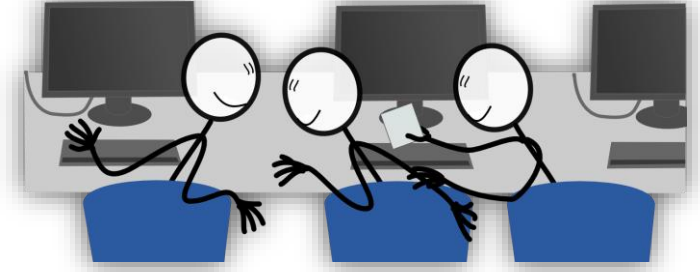


Get mobile using WiFi

- eduroam– best choice, used by universities world wide
 - reused if configured once
- web-psk– only if eduroam doesn't work with your device
 - new connection for new sessions
- camo– open WiFi, you do not need an authentication
 - therefore strongly restricted to
 - <https://www.tu-chemnitz.de>
 - <https://mail.tu-chemnitz.de>
 - <https://login.tu-chemnitz.de>
- Configuration:
 - <https://www.tu-chemnitz.de/urz/network/access/wlan.html#ssid>



Computer Labs



- central labs
 - for lectures and practical training
 - furthermore for individual use within the limits of studies
 - entrance with TUC card, login with your personal account
- public work places of the library
 - Linux, useable like the computer labs, primarily for online research
 - logout when finished, do **not switch off**
 - lock screen when leaving for a **short** break
 - remember your USB devices



Printing

- one printer per computer lab
- multifunctional devices (print/scan/fax)
- location overview: <https://www.tu-chemnitz.de/urz/mfp/mfp.html>
- PaperCut
 - adding money onto your account via
 - Papercut Shop vouchers
 - bank transfer
 - TUC card
- FindMe = virtual printing queue





Software and Campus Licenses

- „MS Landesvertrag“ 8/2013 to 4/2017
 - Core Client Access License Suite for students and staff
- tools/software for e.g. statistics, graphics, office, math or simulation installed within the different computer labs
- <https://www.tu-chemnitz.de/urz/software/software.php>
- home use of some software licenses
- MS Office 365 ProPlus for students:
 - <https://www.tu-chemnitz.de/campussachsen>



Free Software

- graphics: inkscape, gimp, scribus, blender, ...
- office: libre office, thunderbird, LaTeX, ...
- development: gcc, eclipse, ...
- math: gnuplot, octave, ...





Education at the URZ

- Several courses for learning to work with the offered software and services

<https://www.tu-chemnitz.de/urz/bildungsangebot.html#kurse>

- RRZN manuals at IT Service Desk – compact knowledge for little money
- possible student projects or tasks for your bachelor/master thesis at the URZ





Web Services

- dictionary BEOLINGUS (dict.tu-chemnitz.de)
- WFM
- E-Learning Platform OPAL (registering in courses)
- BPS Survey ... tool for online surveys (in case it is needed during your studies)
- ...



General Advices for User

- contact IT Service Desk for help
- personal during the opening hours:



- or via e-mail:
 - support@hrz.tu-chemnitz.de



Further Information

- We recommend to subscribe to our newsletter:
 - informs about URZ courses, important notes for different subjects: security, datacenter, groupware, e-learning, ...
- or visit the blog URZ-Community
 - always up-to-date, contains news and howtos, can be commented or even extended by your own articles

