



TECHNISCHE UNIVERSITÄT  
CHEMNITZ

Universitätsrechenzentrum

## Introduction to the Services of the University Computing Centre





## Outline

- What is the University Computing Centre (URZ)?
- What kind of services are available?
- How can I use these services?
- General hints and suggestions for using the IT services

**These slides are available at [mytuc.org/vmsq](http://mytuc.org/vmsq)**





## Student User Account - Activation

- <https://idm.hrz.tu-chemnitz.de/apps/sbservice/student/>
- data record sheet („Datenkontrollblatt“) necessary
- after filling in and reading/accepting the terms of service: print out the **General terms of use**
- your user name (NKZ) is shown – **memorise it**
- sign it, bring or send the signed „General terms of use“ to the IT service desk of the URZ



## TUC-Card

- access to pools
- fetching print jobs at mfp
- identification for the library
- matriculation, confirmation (each term), de-registration
- (VMS, refectory, ...)

**Please, regard: When leaving the university, you are no longer user of any URZ service.**





## Student User Account

- holds personal data (please update in case of change)
- password adjustments
- services (e-mail, storage, databases)
- finances (printing/papercut)

**Please, take care of your password!**

<https://www.tu-chemnitz.de/urz/idm/account/password.html>

- for mobile devices: use service of device specific passwords (IdM)



# Private Storage and E-Mail

## E-Mail

- limited quota
- mail aliases (standard: *given name.surname@sYEAR.tu-chemnitz.de*)
- read E-Mail regularly, it is the primary instrument for communication within the university
- forwarding policies

## Storage

- individual HOME directories for LINUX and Windows, limited quota
- special folders : PRIVAT, public\_html (AFS)
- **put sensitive data always into PRIVAT**



## External Access

- E-Mail
  - <https://mail.tu-chemnitz.de>
- Storage
  - <https://login.tu-chemnitz.de>
    - WFM
    - SmartWFM
    - SSH
- Connect directly to the campus network via Virtual Private Network (VPN)



## Get mobile using WiFi

- eduroam – best choice, used by universities world wide
  - reused if configured once
- web-psk – only if eduroam doesn't work with your device
  - new connection for new sessions
- camo – open WiFi, you do not need an authentication
  - therefore strongly restricted to
    - <https://www.tu-chemnitz.de>, <https://mail.tu-chemnitz.de>,  
<https://login.tu-chemnitz.de>
- Configuration:
  - <https://www.tu-chemnitz.de/urz/network/access/wlan.html#ssid>



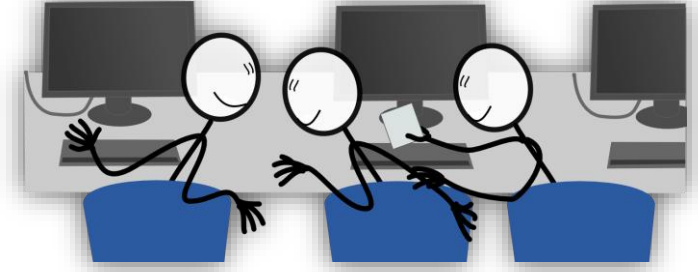


## Get mobile using WiFi – Example for Android

- EAP-Methode: PEAP
- Phase 2-Authentication: MSCHAPV2
- CA-Certifikate: download *root.crt* at [m.tu-chemnitz.de](http://m.tu-chemnitz.de) and name it e. g. „telekom“
- Client Certificate: --
- Identity: <NKZ>@tu-chemnitz.de
- Anonymous Identity: anonymous@tu-chemnitz.de
- Password for Wifi: <your account password> (best choice is the device specific one)



## Computer Labs



- central labs
  - for lectures and practical training
  - furthermore for individual use within the limits of studies
  - entrance with TUC card, login with your personal account
- public work places of the library
  - Linux, useable like the computer labs, primarily for online research
  - logout when finished, do **not switch off**
  - lock screen when leaving for a **short** break
  - remember your USB devices



# Printing

- one printer per computer lab
- multifunctional devices (print/scan/fax)
- location overview: <https://www.tu-chemnitz.de/urz/mfp/mfp.html>
- PaperCut
  - adding money onto your account via
    - Papercut Shop vouchers
    - bank transfer
    - TUC card
- FindMe = virtual printing queue





## Software and Campus Licenses

- „MS Landesvertrag“ 8/2013 to 4/2017
  - Core Client Access License Suite for students and staff
- tools/software for e.g. statistics, graphics, office, math or simulation installed within the different computer labs
- <https://www.tu-chemnitz.de/urz/software/software.php>
- home use of some software licenses
- MS Office 365 ProPlus for students:
  - <https://www.tu-chemnitz.de/campussachsen>



## Free Software

- graphics: inkscape, gimp, scribus, blender, ...
- office: libre office, thunderbird, LaTeX, ...
- development: gcc, eclipse, ...
- math: gnuplot, octave, ...





## Education at the URZ

- Several courses for learning to work with the offered software and services

<https://www.tu-chemnitz.de/urz/bildungsangebot.html#kurse>

- RRZN manuals at IT Service Desk – compact knowledge for little money
- possible student projects or tasks for your bachelor/master thesis at the URZ





# Education at the URZ –winter 2015/2016

- **Sicheres Programmieren mit PHP**  
21.10.2015, 13:45 Uhr bis 17:00 Uhr , Reichenhainer Str. 70, B302
- **Software gemeinsam entwickeln mit Git und GitLab**  
25.11.2015, 13:45 Uhr bis 17:00 Uhr, Straße der Nationen 62, 203
- **GIMP – Bildbearbeitung unter Linux**  
8./9.12.2015, 13:45 Uhr bis 17:00 Uhr, Reichenhainer Str. 70, B302
- **Effizientes Arbeiten mit MS Excel**  
16.12.2015, 13:45 Uhr bis 17:00 Uhr, Reichenhainer Str. 70, B302
- **Wissenschaftliche Arbeiten mit MS Word**  
20.1.2016, 13:45 Uhr bis 17:00 Uhr, Reichenhainer Str. 70, B302
- **Wissenschaftliche Arbeiten mit LaTeX**  
10./17./24.2.2016, 13:45 Uhr bis 17:00 Uhr, Reichenhainer Str. 70, B302



## Web Services



- dictionary BEOLINGUS (dict.tu-chemnitz.de)
- E-Learning Platform OPAL for course registration  
<https://bildungsportal.sachsen.de/opal/auth/home>
- BPS Survey – tool for online surveys based on the Software Lime Survey  
<https://www.tu-chemnitz.de/e-learning/survey-umfragen.html>







## General Advices for User

- contact IT Service Desk for help
- personal during the opening hours:

Monday	Tuesday	Wednesday	Thursday	Friday
<ul style="list-style-type: none"><li>• 08:45 - 11:30</li><li>• 12:30 - 16:00</li></ul>	<ul style="list-style-type: none"><li>• 12:30 - 18:00</li></ul>	<ul style="list-style-type: none"><li>• 08:45 - 12:00</li></ul>	<ul style="list-style-type: none"><li>• 08:45 - 11:30</li><li>• 12:30 - 16:00</li></ul>	<ul style="list-style-type: none"><li>• 08:45 - 12:00</li></ul>

- or via e-mail:
  - [support@hrz.tu-chemnitz.de](mailto:support@hrz.tu-chemnitz.de)



## Further Information

- We recommend to subscribe to our newsletter:
  - informs about URZ courses, important notes for different subjects: security, datacenter, groupware, e-learning, ...
- or visit the blog URZ-Community
  - always up-to-date, contains news and howtos, can be commented or even extended by your own articles

